

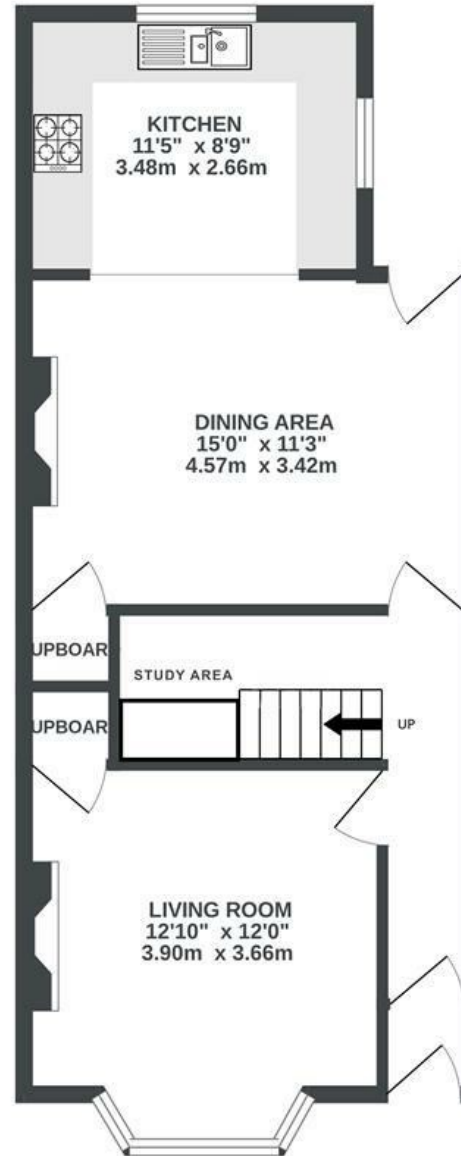
Gwilliam Street

WINDMILL HILL

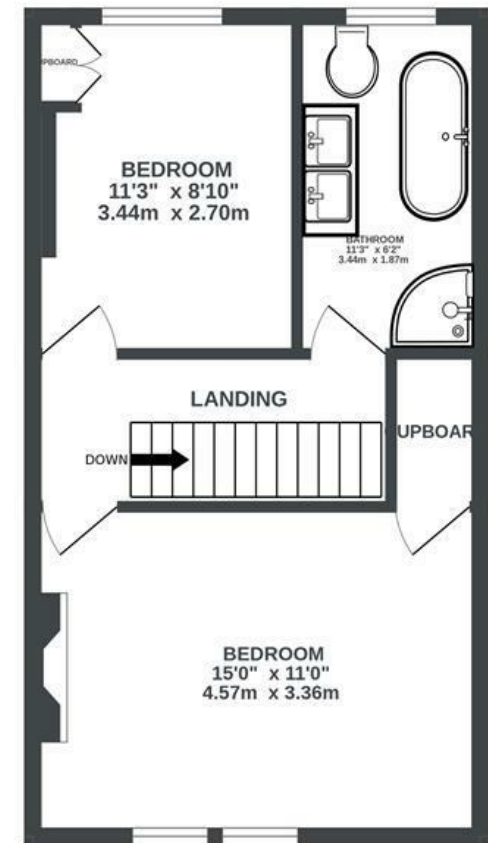
APPROXIMATE FLOOR AREA
85.3 SQM / 918 SQFT



GROUND FLOOR



FIRST FLOOR



Boardwalk

Gwilliam Street

WINDMILL HILL, BRISTOL



£450,000



2 Bedrooms



Bristol, BS3



1 Bathrooms

41 T

"We will really miss relaxing in the sun on our decking at "City View", watching the sun set over the Bristol skyline. We are lucky to be surrounded by fab options to eat and drink; whether it's picking up pastries from Loaf, strolling over to Wapping Wharf, or popping to North Street for a pint. Victoria Park is just at the end of our road and we are a twenty minute walk into the centre of town. We have loved being the most recent custodians of this very special house, in the perfect location."

